

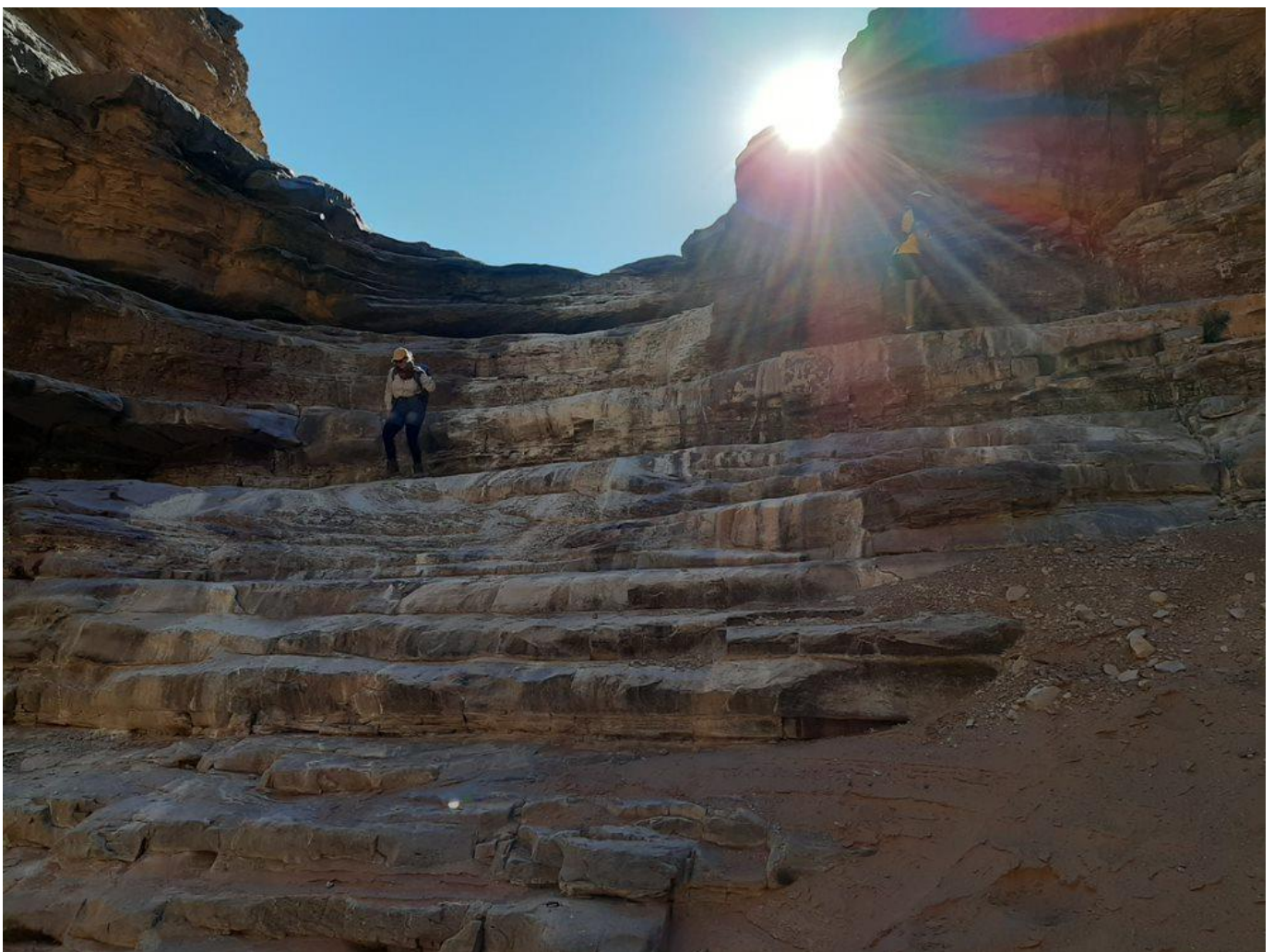


---

# FISH RIVER CANYON TRAILS (LUGGAGE-FREE HIKING)

---

15 APRIL 2020 – 15 SEPTEMBER 2021



“The best view comes after the hardest climb” – unknown



Experience the magical atmosphere of our rustic self-catering camps while exploring the northern reaches of the Fish River Canyon.

Package Option	all rates indicated in N\$	RACK RATE
Klipspringer Trail (17km) 3 Nights Battlesnake – Koelkrans - Horseshoe		1575.00 per person
Zebra Trail (35km) 3 Nights Base Camp – Battlesnake – Horseshoe		1575.00 per person
Fish Eagle Trail (35km) 4 Nights Base Camp – Battlesnake – Koelkrans – Horseshoe		2100.00 per person

\*Pre / Post hike accommodation is available and bookable via your consultant.

#### This rate includes:

- Self-catering Camp accommodation
- Hikers drop-off and pick-up at starting and end points
- Luggage & supply transfer between camps

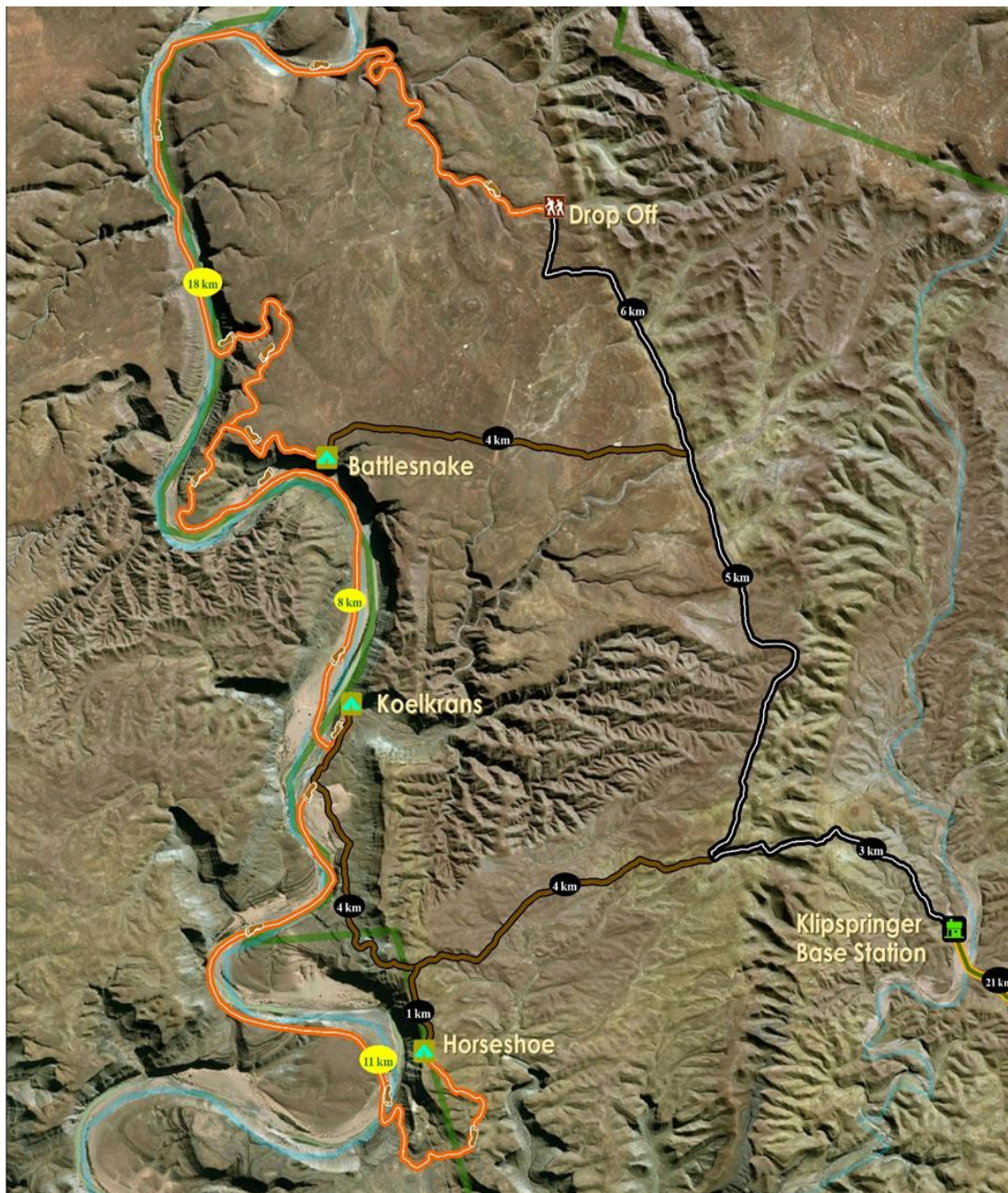
This convenient slackpacking option allows you to see more and carry less.







TRAIL MAP & ESTIMATED DISTANCES





---

## GENERAL TERMS AND CONDITIONS

---

### GENERAL [see here](#)

#### *Additional terms and conditions for Slackpacking at the Canyon Klipspringer Camps*

- *Minimum age 12*
- *Minimum number of participants is 4 persons. Maximum number of participants is 14 persons.*
- *This adventure has no maximum age limit, but those taking part must be able to satisfy minimum health and mobility requirements.*
- *If you are aware of underlying medical conditions, please consult your medical practitioner prior to participating in the hike.*
- *Travel insurance compulsory for participants (covering but not limited to costs for medical attention, treatment, emergency evacuation, etc)*
- *Signature of indemnity form at check-in is compulsory for all participants.*
- *All transfers are operated in an open vehicle.*
- *If the canyon is to be closed due to water shortage or flood, all clients will be informed, and the refund process will be decided at the discretion of our team of managers and directors.*
- *The terms and conditions are subject to change at any time without notice.*

### CANCELLATION POLICY [see here](#)

- *+29 days prior to arrival: 10%*
- *22 - 28 days prior to arrival: 20%*
- *15 - 21 days prior to arrival: 30%*
- *08 - 14 days prior to arrival: 50%*
- *04 - 07 days prior to arrival: 75%*
- *01 - 03 days prior to arrival: 90%*

### ONLINE BOOKINGS

Gondwana Collection Namibia accommodation facilities can be booked online [here](#)

Gondwana Collection Namibia online availability can be checked [here](#)

### ONLINE PAYMENT PROCEDURE [see here](#)

### ONLINE ENQUIRY VIA WEBSTORE [see here](#)

*For General Enquiries only.*

*For Accommodation availability enquiries only.*

*For Quotation Enquiries/Requests only.*

*Due to the nature of the enquiry, the Availability Status given by our booking agent is not binding.*



**BOOKING PROCEDURE:**

- Check ALL booking details on the Booking Summary/Confirmation received.
- Advise Gondwana booking agent of incorrect booking details or changes immediately.

**PAYMENT AND REFUND PROCEDURE:**

- Always use the Booking Reference Number on the proof of payment.
- Send the Proof of payment to your Booking Consultant.
- It is compulsory to have your proof of payment and booking confirmation from Gondwana with you at time of check-in.

**EFT Payment**

- Bank: Bank Windhoek Limited
- Account Name: Gondwana Collection Namibia (Pty) Ltd.
- Account Number: 8014638686
- Branch Code 481-972
- International Bank Transfer
- SWIFT BWLINANX (International Transfers only) Swift Fess apply and will be for payee's account.

or

- Bank: FNB Business (First National Bank Business)
- Account Name: Gondwana Collection Namibia (Pty) Ltd.
- Account Number: 622 624 541 78
- Branch Code 281 872 (from RSA please use universal branch Code 282 672)
- International Bank Transfer
- SWIFT FIRNNANX (International Transfers only) Fees apply and will be for payee's account.

**Credit Card Payment Facility** [see here](#)

enter your Booking Number as Reference

**Payment Facility at the Camps**

No speed-point of EFT payment can be facilitated at Klipspringer Base Camp, cash only.

The Link to our [GDRP Compliance Document](#)

*We hope to receive your booking soon!*